

# Nordic networks

## Nordic Welfare Centre

27 of May 2024

Kai Koivumäki

Operations Manager

[kai.koivumaki@nordicwelfare.org](mailto:kai.koivumaki@nordicwelfare.org)



# Mission

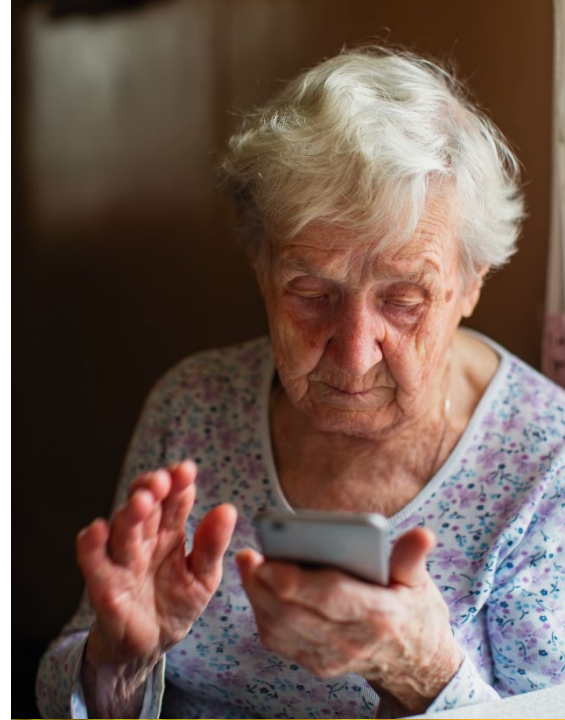
- Our mission is to contribute to the development of welfare initiatives in the Nordic region by compiling and disseminating knowledge on welfare issues
- Our target audience includes, politicians, decision makers, researchers, civil society etc.
- To study and promote the Nordic welfare model





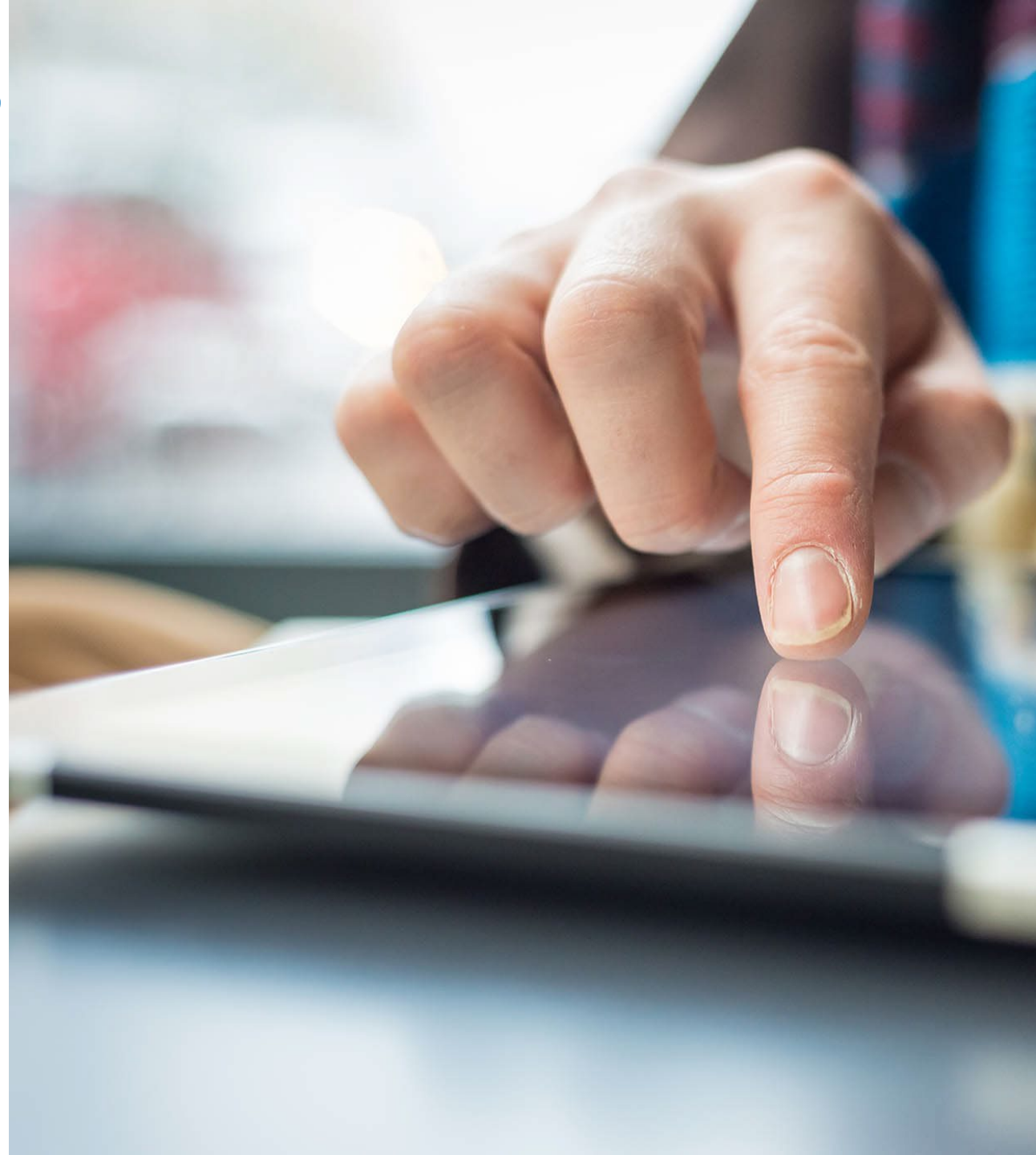
# Focus areas

- Children and youth
- Older adults
- Disability
- Welfare technology
- Integration
- Public health



# How do we operate?

- Seminars and conferences
  - Publications
  - **Networks!**
- Dissemination and communication of knowledge



# Networks and expert groups in NWC

- Altogether **25 active networks or working groups under NWC** + 15 coordinated from Nordic Council of Ministers in Copenhagen
- Expert networks: The first 1000 years in a child's life, Physical activity and public health, Persons in complex needs of social services, Dementia, Leader Forum for deafblindness, Network for age friendly cities etc. (mandate often from the Committee of Senior officials)
- Research networks: welfare technology, experience network in disability, deaf blindness, children in low income families etc. (mandate from NWC)



# Networks and expert groups in NWC

- Reference groups, steering committees etc. within Nordic projects: e.g Covid 19 consequences for children and youth, (mandate from the project)
- “Nordic organs”: Nordic disability council (mandate from the NCM), Public health arena etc.
- Networks between disability organisations are promoted through Nordic funding scheme: minimum three Nordic or Baltic organisations can get funding for networking activities



# Findings and experiences

- Networks expand the formal Nordic cooperation and anchor the work in national and local surroundings
- Bilateral, informal contacts important
- Networks are **necessary and absolutely** crucial for knowledge production:
  - To find the right knowledge
  - To gather and put up the knowledge
  - To distribute the knowledge
  - To apply the knowledge
- Personal engagement important: win-win





## Emilia Berg, Master's thesis:

[Sharing is caring: The official and practical understanding of the concept Nordic added value in the field social and health policy \(helsinki.fi\)](#)

### Nordic added value of the networks

- Reducing or erasing many barriers to collaboration can support the accomplishment of Nordic added value: e.g. lack of national interest
- Lot of value for small resources; EU cooperation distracts resources from Nordic cooperation
- Too much measuring and focus on the concept can restrict Nordic cooperation



# Suggestions for development

- Let there be difference: many kind of networks can function well
- Keep it creative and informal
- Use different forms and channels; physical meeting combined with digital activities
- Formalise the work in order to help the network to accomplish the goals: clear mandates important
- Make agreements with the organisations where the participants come from
- Be pragmatic with the languages
- Enjoy and have fun!



# Do you want to know more?

- [Nordicwelfare.org](http://Nordicwelfare.org)
- Facebook: Nordens välfärdscenter
- Twitter: @Nordicwelfare1
- LinkedIn: Nordic Welfare Centre



# Thank you.

## Nordic Welfare Centre

[nordicwelfare.org](http://nordicwelfare.org)

Facebook: Nordens välfärdscenter

Twitter: @Nordicwelfare1

LinkedIn: Nordic Welfare Centre